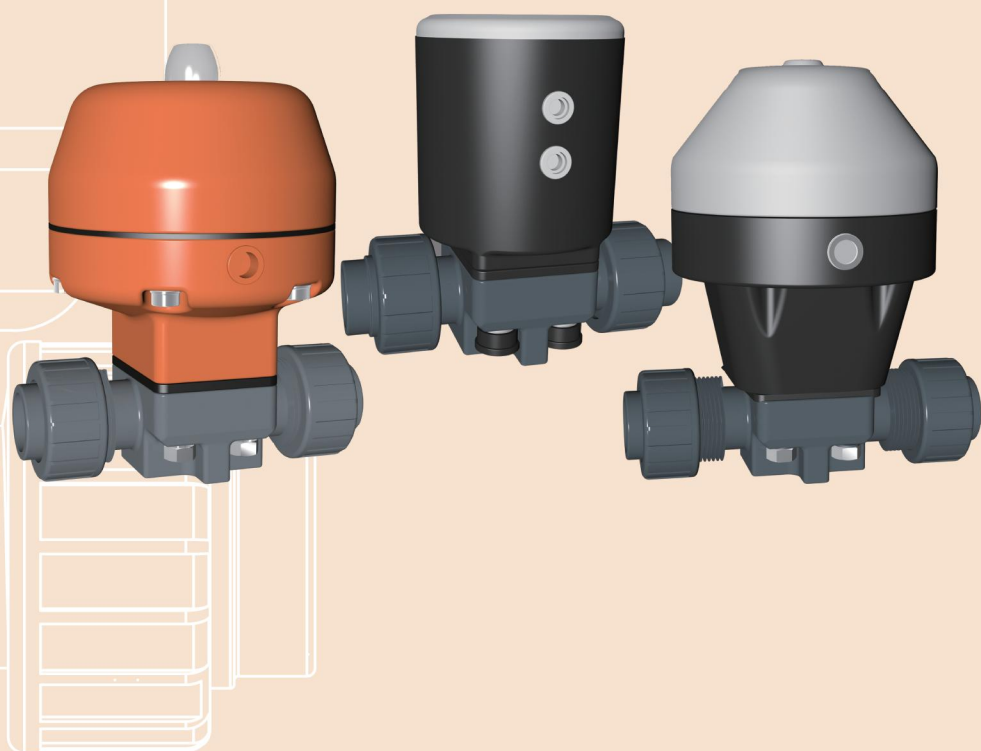


LAPAR

塑膠隔膜閥 LPE11-

Plastic Diaphragm Valve



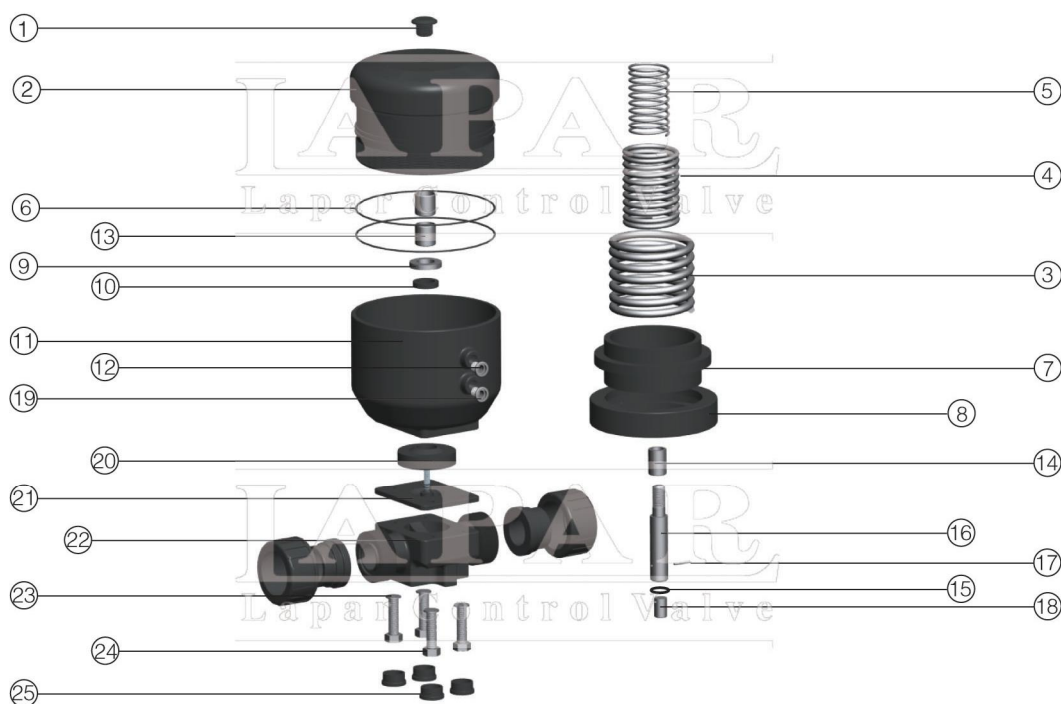


塑胶隔膜阀 LPE11- Plastic Diaphragm Valve



阀类代号 Code	执行机构 Actuator	作用形式 Action	出厂状态 Air Fail Position	控制方式 Control	结构形式 Structure	阀体材质 Body Material	膜片材质 Diaphragm	膜头材质 Actuator	连接方式 Connection	口径 DN	压力 PN
LPE11-	1 气动 Pneumatic 8 涡轮 Turbine 0 其它 Others	D 双作用 Double-acting S 单作用 Single-acting 0 其它 Others	1 常开 Normally Open 2 常闭 Normally Closed 3 无固定 Flexible 4 保位 Held 0 其它 Others	A 开关型 On-off B 调节型 Control 0 其它 Others	5 一体式 One-piece 0 其它 Others	F UPVC G CPVC H PP V PVDF 0 其它 Others	U FPM O EPDM N NBR P PTFE 0 其它 Others	E QT H PP 0 其它 Others	1 法兰 Flange 7 由令 Union	0	0

设计特性 Design Feature



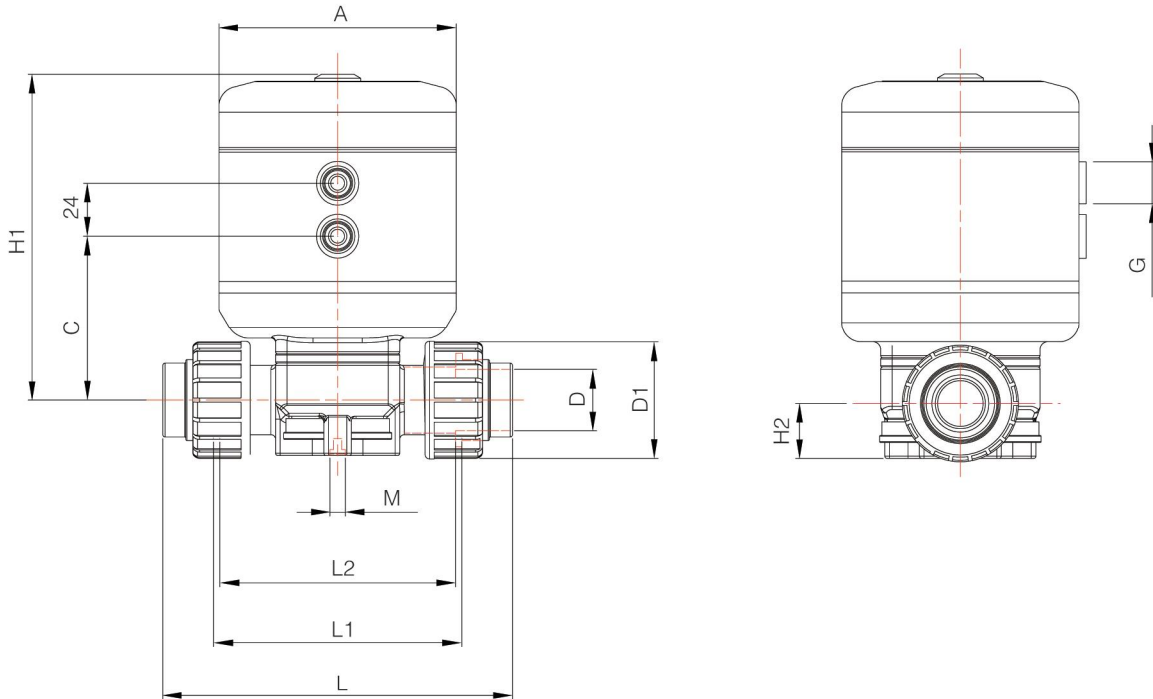
NO.	零件 Part	材质 Material
1	堵头 Plug	PP
2	执行器上盖 Actuator-upper Part	PA
3	弹簧 Spring	Carbon Steel
4	弹簧 Spring	Carbon Steel
5	弹簧 Spring	Carbon Steel
6	O型圈 O-ring	NBR
7	活塞 Piston	PA
8	密封 Seal	NBR
9	垫片 Washer	Brass
10	方型垫片 Quad-ring	NBR
11	执行器下盖 Actuator-lower Part	PA
12	螺纹堵头 Threaded Plug	PA
13	轴承 Spindle bearing	Metal/PTFE
14	上轴承 Upper spingle	Stainless Steel
15	O型圈 O-ring	NBR
16	下轴承 Lower Spindle	Stainless Steel
17	销钉 Pin	Stainless Steel
18	连接轴 Coupling	Stainless Steel
19	堵头 Plug	PP
20	压片 Compressor	PA
21	密封膜片 Sealing Diaphragm	EPDM,FPM,NBR,CSM,PTFE
22	阀体 Body	U-PVC,PVC-C,PP,PVDF,ABS
23	垫片 Washer	Zincplated Steel
24	六角螺栓 Hexagonal Screw	Zincplated Steel
25	堵头 Plug	PE



塑膠隔膜閥 LPE11-
Plastic Diaphragm Valve



MK系列 MK Series



Unit:mm

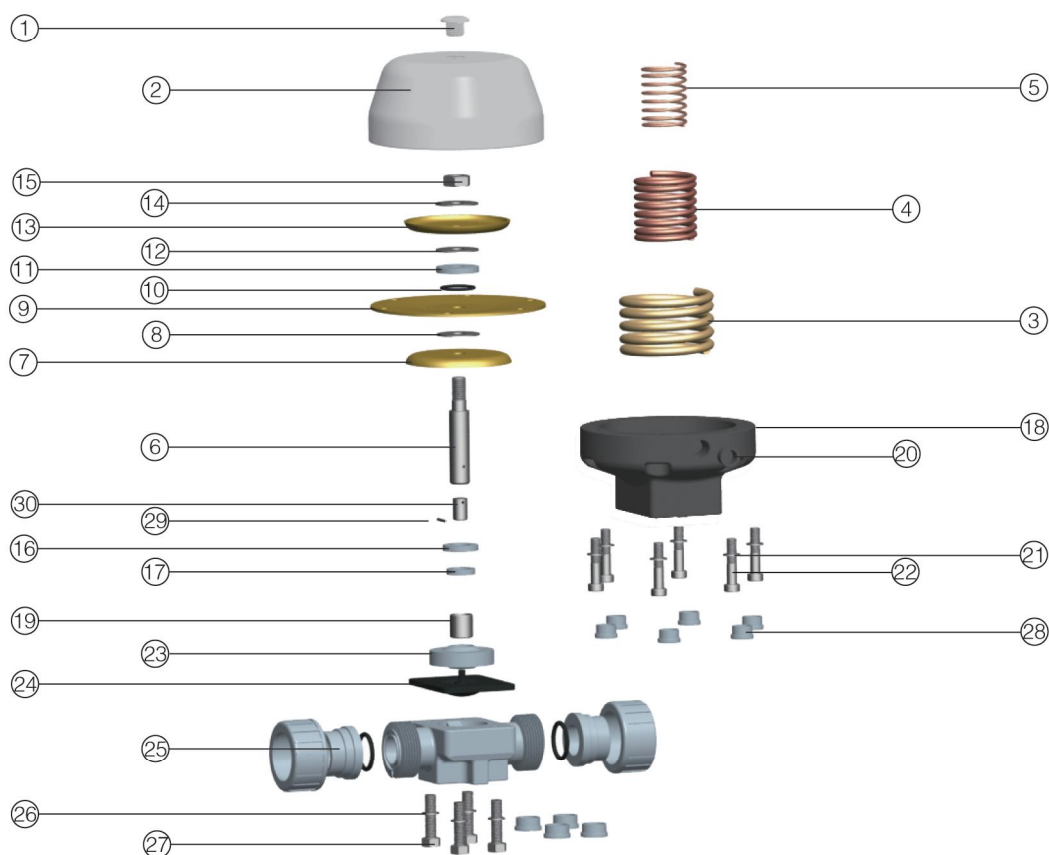
DN	PN	L	L1	L2	D	D1	H1	H2	M	A	C	G
15	10	147	114	108	20	41	144	26	M6	95	89	1/4"
20	10	154	116	108	25	50	144	26	M6	95	89	1/4"
25	10	168	121	116	32	58	144	26	M6	95	89	1/4"
32	10	192	142	134	40	72	171	40	M8	114	103	1/4"
40	10	222	162	154	50	79	171	40	M8	114	103	1/4"
50	10	266	194	184	63	98	216.5	40	M8	144	145	1/4"



塑胶隔膜阀 LPE11- Plastic Diaphragm Valve



设计特性 Design Feature



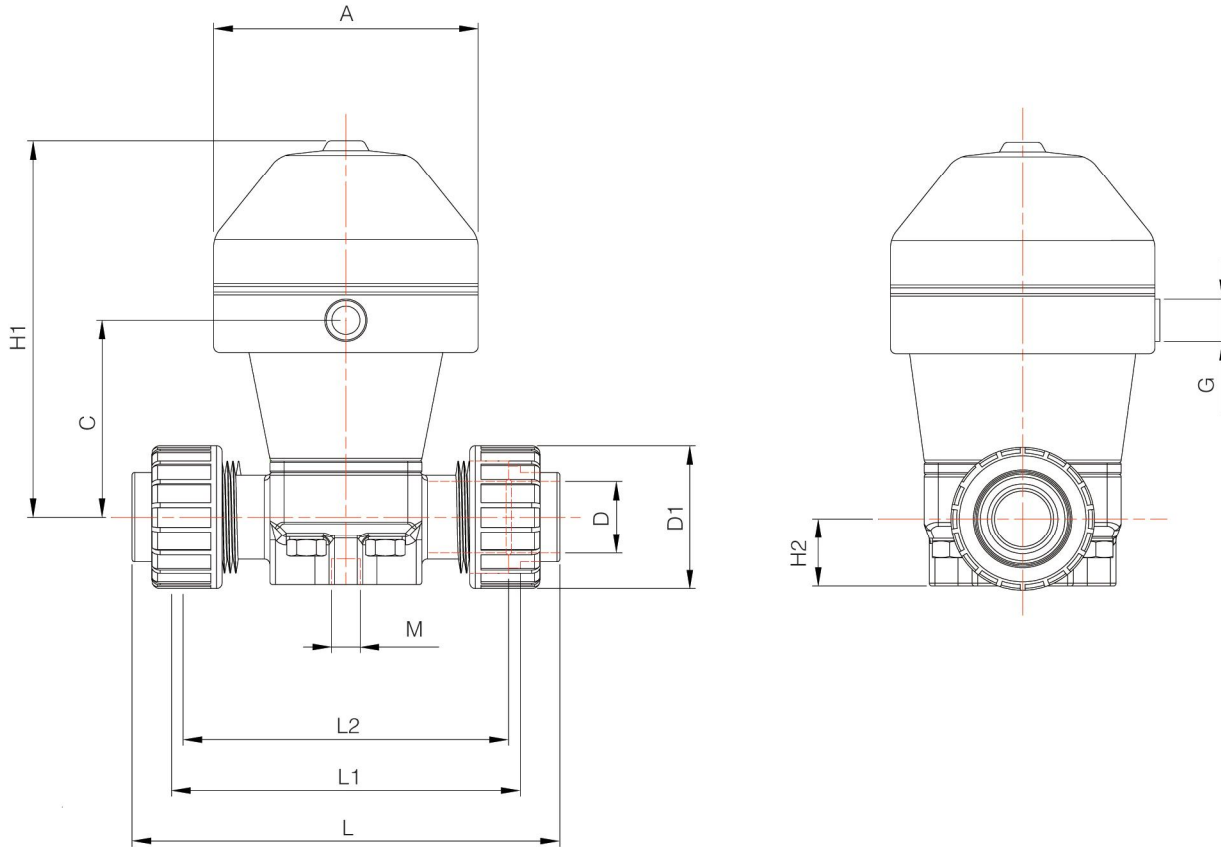
NO.	零件 Part	材质 Material
1	堵头 Plug	PP
2	执行器上盖 Atuator-upper Part	PP/Glass
3	弹簧 Spring	Carbon Steel
4	弹簧 Spring	Carbon Steel
5	弹簧 Spring	Carbon Steel
6	轴承 Spindie	Stainless Steel
7	隔膜压盘 Press Diaphragm-plate	Zincplatr Steel
8	垫片 Washer	NBR
9	控制膜片 Control Diaphragm	CR
10	O型圈 O-ring(DN32-50)	NBR
11	隔离垫圈 Spacer Ring (DN32-50)	Zincplatr Steel
12	垫片 Washer	NBR
13	隔膜压盘 Press Diaphragm-plate	Zincplatr Steel
14	垫片 Washer	Zincplatr Steel
15	锁定活接 Locknut	Zincplatr Steel
16	安全垫片 Security Washer	Brass
17	方型垫圈 Quad-ring	NBR
18	执行器下盖 Atuator-lower Part	PP/Glass
19	轴承 Spindie bearing	Metal/PTFE
20	堵头 Plug	PE
21	垫片 Washer	Zincplatr Steel
22	筒型螺钉 Cylindrical Screw	Zincplatr Steel
23	压片 Compressor	PBTP
24	密封膜片 Sealing Diaphragm	EPDM,FPM,NBR,CSM,PTFE
25	阀体 Body	PVC,PVC-C,PP,PVDF,ABS
26	垫片 Washer	Zincplatr Steel
27	六角螺钉 Hexagonal Screw	Zincplatr Steel
28	堵头 Plug	PE
29	销钉 Pin	Stainless Steel
30	连接轴 Couping	Stainless Steel



塑胶隔膜阀 LPE11-
Plastic Diaphragm Valve



VM系列 VM Series



Unit:mm

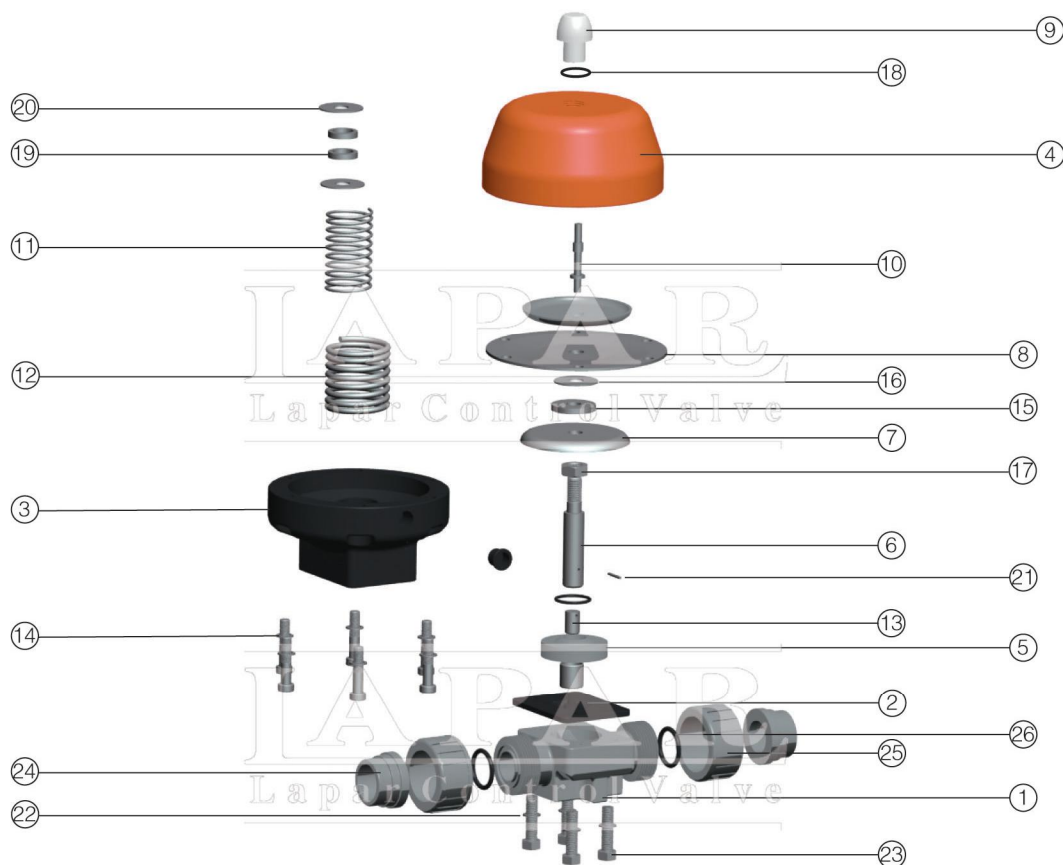
DN	PN	L	L1	L2	D	D1	H1	H2	A	M	C	G
15	10	147	115	108	20	41	175	26	126	M6	66	1/4 "
20	10	154	116	108	25	50	175	26	126	M6	66	1/4 "
25	10	168	124	116	32	58	175	26	126	M6	66	1/4 "
32	10	192	140	134	40	72	244	40	155	M8	103	1/4 "
40	10	222	160	154	50	79	244	40	155	M8	103	1/4 "
50	10	266	190	184	63	98	292	40	210	M8	125	1/4 "



塑胶隔膜阀 LPE11- Plastic Diaphragm Valve



设计特性 Design Feature



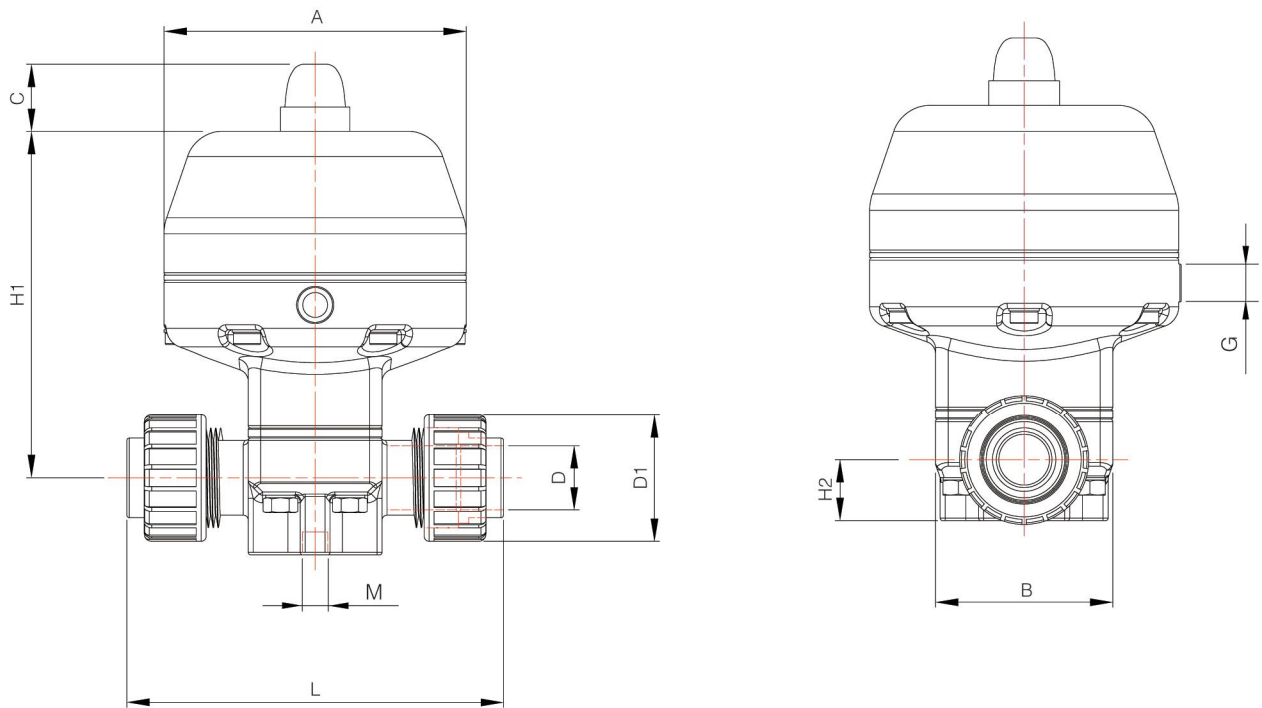
NO.	零件 Part	材质 Material
1	阀体 Body	PVC,PVC-C,PP,PVDF,ABS
2	密封膜片 Sealing Diaphragm	Diap
3	执行器下盖 Atuator-lower Part	Hou
4	执行器上盖 Atuator-upper Part	Hou
5	压片 Compressor	EPDM,FPM,NBR,CSM,PTFE
6	轴承 Spindie	Driving Shaft
7	隔膜压盘 Press Diaphragm-plate	Disc
8	膜片 Diaphragm	Diaphragm
9	上盖 Cap	Cap
10	调节螺栓 Adjustment Screw	Adjustment Screw
11	弹簧 Spring	Pressure Spring
12	弹簧 Spring	Pressure Spring
13	连接轴 Couping	Banjo Bolt
14	六角螺栓 Socket Head Cap Screw	Socket Head Cap Screw
15	U型垫片 U-washer	U-washer
16	垫片 Washer	Circlip
17	O型圈 O-ring	NBR
18	O型圈 O-ring	NBR
19	O型圈 O-ring	NBR
20	六角螺母 Hexagonal Nut	Hexagonal Nut
21	销钉 Pin	Clamping Sleeve
22	U型垫片 U-washer	U型垫片 U-washer
23	六角螺栓 Hexagonal Screw	Hexagonal Screw
24	由令 Union	Union Nut
25	承插件 Insert	Insert
26	O型圈 O-ring	O-ring



塑胶隔膜阀 LPE11-
Plastic Diaphragm Valve



MV系列 MV Series



Unit:mm

DN	L			D	D1			G	H1		C		A	B	M	H2
	PVC-U/C	PP	PVDF		PVC-U/C	PP	PVDF		NC	NO/DA	NC	NO/DA				
15	128	125	128	20	41	46	47	1/4"	136	47	29	41	122	72	M6	26
20	152	146	150	25	50	50	57	1/4"	136	57	29	41	122	72	M6	26
25	166	158	162	32	58	66	64	1/4"	175	64	29	41	152	92	M6	26
32	192	181	184	40	72	79	78	1/4"	175	78	29	41	152	92	M8	40
40	222	207	210	50	79	87	89	1/4"	207	89	41	41	192	119	M8	40
50	226	244	248	63	98	107	109	1/4"	207	109	41	41	192	119	M8	40
65	-	-	-	75	-	-	-	1/4"	325	305	-	-	258	-	M12	55
80	-	-	-	90	-	-	-	1/4"	325	305	-	-	258	-	M12	55
100	-	-	-	110	-	-	-	1/4"	355	330	-	-	258	-	M12	64